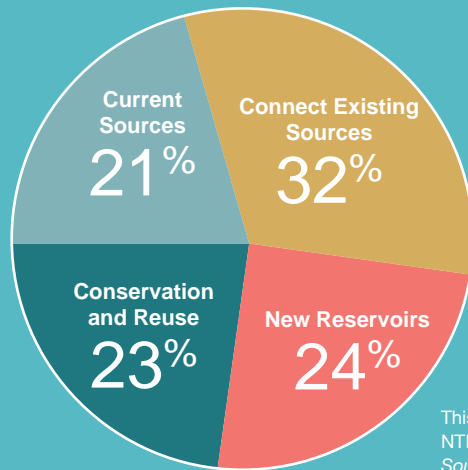


Efficient, Wise Use of Resources Remains Priority

Conservation and reuse are key strategies in the NTMWD long-range water supply plan. NTMWD and its Member Cities and customers are recognized as leaders in water conservation and reuse and have robust programs and innovative projects to help maximize available supplies. However, conservation and reuse alone cannot reliably meet our communities' needs beyond 2021. One-quarter of future supplies must come from new sources.



This chart represents NTMWD supplies in 2070. Source: 2016 Region C Water Plan.

Significant Economic Benefits

Economic growth will accompany the development and construction of the LBCR. Fannin County and nearby Collin, Delta, Hunt, and Lamar counties will all benefit early in the construction phase. The completed LBCR will eventually boost net taxable real estate values in Fannin County by an estimated \$316 million.*

The LBCR also benefits the Fannin County and the NTMWD service areas by providing additional water supplies to support projected growth in the region. Stable water supplies enable NTMWD communities to attract and support new businesses and jobs.

The recreational amenities provided by the reservoir could generate \$166 million of annual economic activity per year in Fannin County through activities such as fishing and boating, as well as new industrial and commercial opportunities.*

*Based on 2015 updated independent analysis by Clower, T. & Weinstein, B.



501 E. Brown Street, Wylie, TX 75098
p: 972-442-5405 | www.NTMWD.com

NTMWD MEMBER CITIES

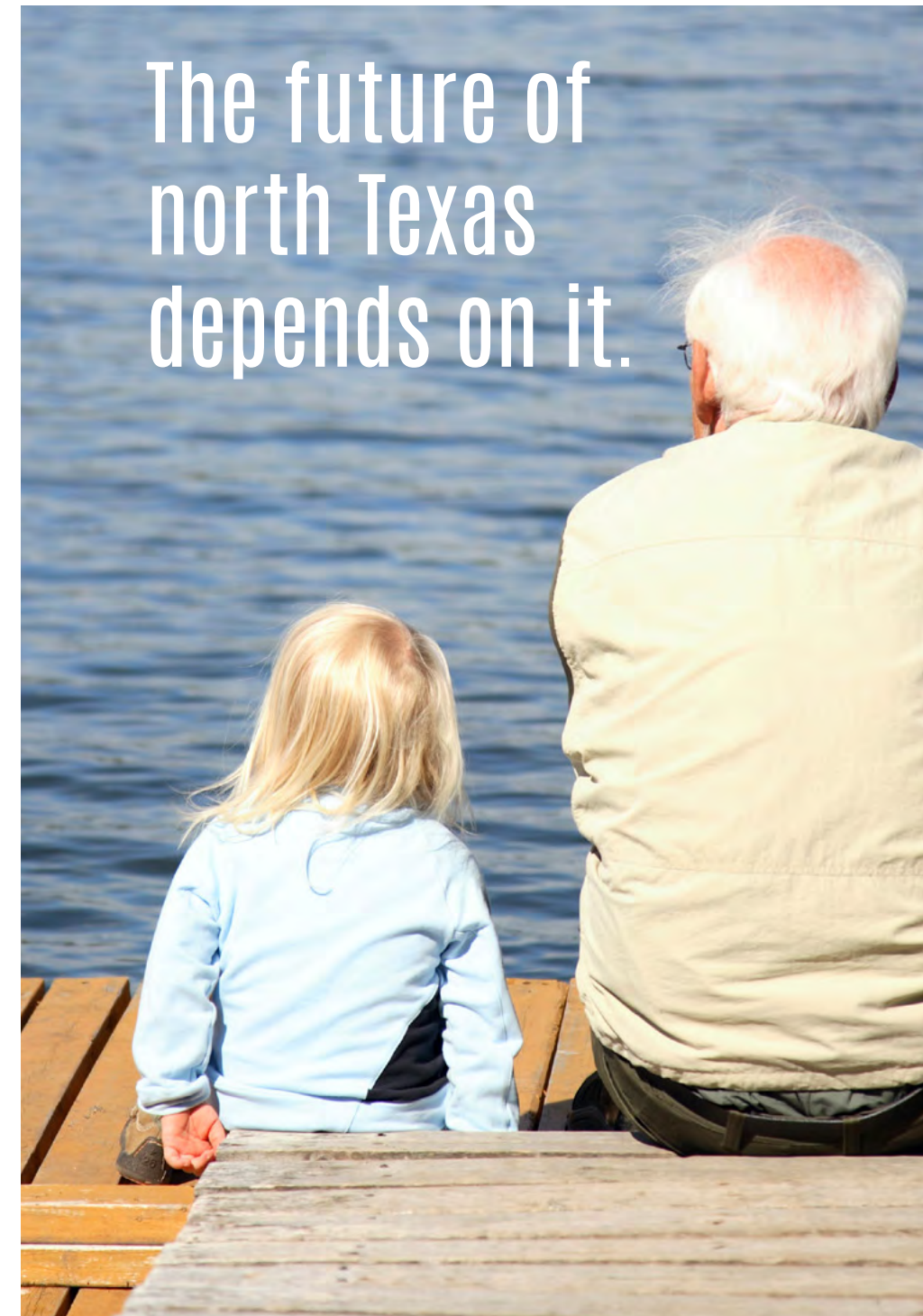
- Allen
- Farmersville
- Forney
- Frisco
- Garland
- McKinney
- Mesquite
- Plano
- Princeton
- Richardson
- Royse City
- Rockwall
- Wylie

Water System Customers

- Ables Springs Water Supply Corporation
- City of Bonham
- Caddo Basin Special Utility District
- Cash Special Utility District
- College Mound Special Utility District
- Copeville Special Utility District
- East Fork Special Utility District
- Town of Fairview
- City of Fate
- Forney Lake Water Supply Corporation
- Gastonia-Scurry Special Utility District
- Greater Texoma Utility Authority (GTUA)
- City of Josephine
- City of Kaufman
- Kaufman Four-One (Crandall)
- Lavon Special Utility District
- Town of Little Elm
- City of Lucas
- City of Melissa
- Milligan Water Supply Corporation
- Mount Zion Water Supply Corporation
- City of Murphy
- Nevada Water Supply Corporation
- North Collin Water Supply Corporation
- City of Parker
- Town of Prosper
- Rose Hill Special Utility District
- City of Rowlett
- City of Sachse
- Seis Lagos Utility District
- Town of Sunnyvale
- City of Terrell
- Wylie Northeast Special Utility District



The Lower Bois d'Arc Creek
RESERVOIR
NORTH TEXAS MUNICIPAL WATER DISTRICT



The future of
north Texas
depends on it.

NTMWD: Serving North Texas for 60+ Years

The North Texas Municipal Water District (NTMWD) is a regional provider of water, wastewater and solid waste disposal services. Serving a population of approximately 1.6 million residents in the north Texas counties of Collin, Dallas, Denton, Fannin, Grayson, Hopkins, Hunt, Kaufman, Rains, and Rockwall – an area covering 2,200 square miles.

Growing Communities = Growing Needs

Water has provided the essential foundation for communities in north Texas to grow over the last several decades. A reliable water supply is critical to meet the needs of current and future residents, as well as to support businesses, jobs and economic prosperity in our region. Based on population growth projections, NTMWD water demands will increase 1.5 times over the next 40 years.

NTMWD Total Population: Historical and Projected

| Year | 1956 | 1961 | 1974 | 1994 | 2015 | 2040 | 2070 |
|-------------------|--------|--------|---------|---------|-----------|-----------|-----------|
| Population Served | 32,000 | 60,000 | 200,000 | 800,000 | 1,600,000 | 2,500,000 | 3,700,000 |

Note: Collin County recently updated growth projections to include 1.3 million more residents than previous estimates.

NTMWD Largest Member Cities Population Growth

| City | 1950 | 1960 | 1970 | 1980 | 1990 | 2000 | 2010 | 2015 |
|------------|--------|--------|--------|---------|---------|---------|---------|---------|
| Frisco | 736 | 1,184 | 1,845 | 3,420 | 6,138 | 33,714 | 116,989 | 145,510 |
| Garland | 10,291 | 38,501 | 81,437 | 138,857 | 180,635 | 215,768 | 226,876 | 232,960 |
| McKinney | 10,560 | 13,763 | 15,193 | 16,249 | 21,283 | 54,369 | 131,117 | 154,840 |
| Mesquite | 1,684 | 27,526 | 55,131 | 67,053 | 101,484 | 124,523 | 139,824 | 142,230 |
| Plano | 2,115 | 3,695 | 17,872 | 72,331 | 127,885 | 222,030 | 259,841 | 271,140 |
| Richardson | 1,289 | 16,810 | 48,405 | 72,496 | 74,840 | 91,802 | 99,223 | 102,430 |

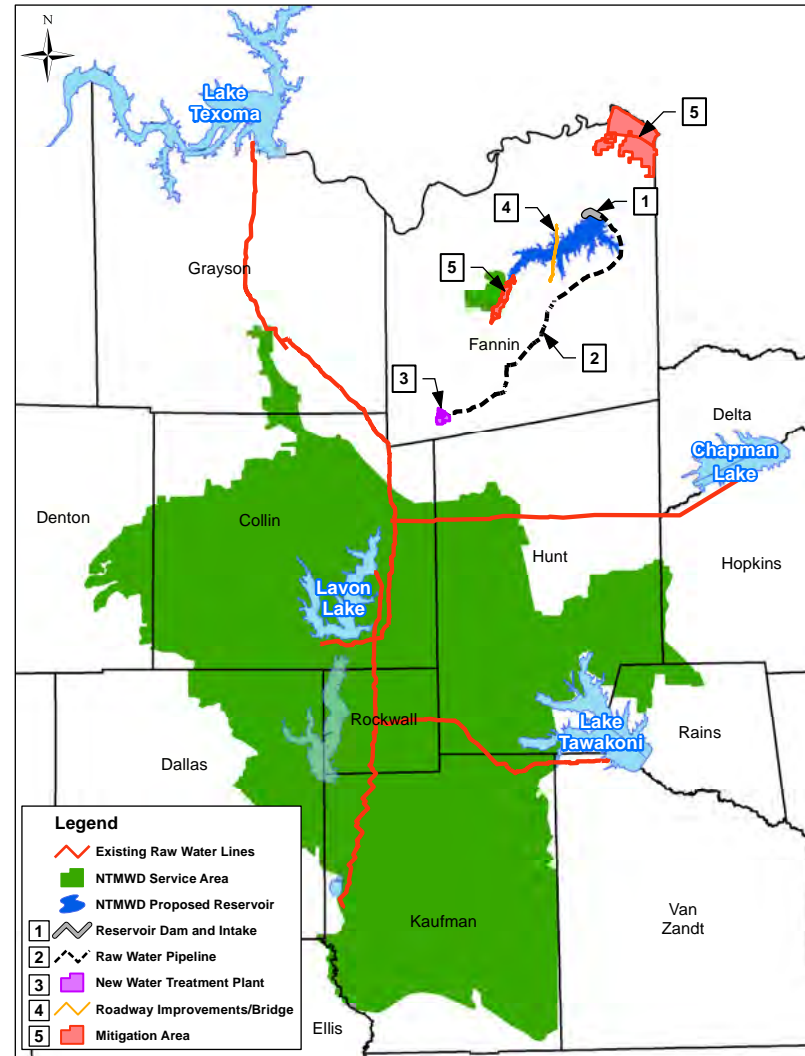
Planning for Future Needs

NTMWD is actively pursuing new water supplies to help meet increasing demands. Even with continued conservation programs to stretch existing supplies, NTMWD will need to have another reliable water supply available to meet our communities' long-term needs. That source is the proposed Lower Bois d'Arc Creek Reservoir (LBCR).

Lower Bois d'Arc Creek Project

The Lower Bois d'Arc Creek Reservoir (LBCR) project consists of five (5) major project components:

1. Reservoir Dam and Intake
2. Raw Water Pipeline
3. Water Treatment Plant
4. Roadway Improvements, Bridge
5. Mitigation Areas



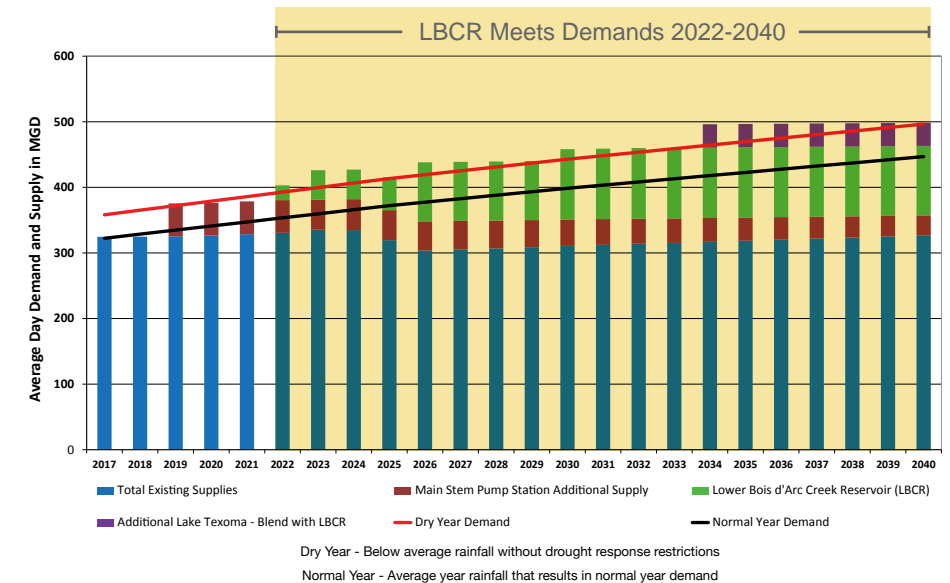
LBCR: Essential for North Texans

The LBCR project is a critical component in the region's long-range water supply plan. This new source not only provides much needed water to meet growing demands, but also enables NTMWD to maximize its existing water supplies. With the LBCR, NTMWD can:

- Meet its projected water supply deficit through 2040
- Utilize additional water from Lake Texoma
- Better serve customers in Fannin County
- Provide recreational opportunities
- Support economic growth in the region

With the new fresh water supplies and additional water from Texoma, this project is the foundation for meeting NTMWD's needs through 2040.

Water Demand and Supply Projections from 2017 to 2040



As the above chart indicates, if the NTMWD service area experiences a multi-year drought that extends into 2020, it will be challenging to meet the region's water needs without implementing emergency drought response measures. NTMWD is pursuing temporary measures to address potential dry-year supply shortfall until LBCR is online.

Key Facts

- Surface area: 16,641 acres
- Storage capacity: 367,609 acre-feet
- Yield: 120,000 acre-feet per year (up to 108 million gallons per day)
- Mitigation sites: 16,800 acres
- Estimated total project cost: approximately \$1.2 billion (2016 dollars)

Status as of July 2017

- State Water Rights Permit Received, June 2015
- Draft Environmental Impact Statement developed by U.S. Army Corps of Engineers
- 404 Clean Water Act Permit (under review)
- NTMWD has invested more than \$141 million toward planning, permitting, engineering and land acquisition for LBCR – 85 percent of land acquired.
- Fannin County is studying development plans around new reservoir area.